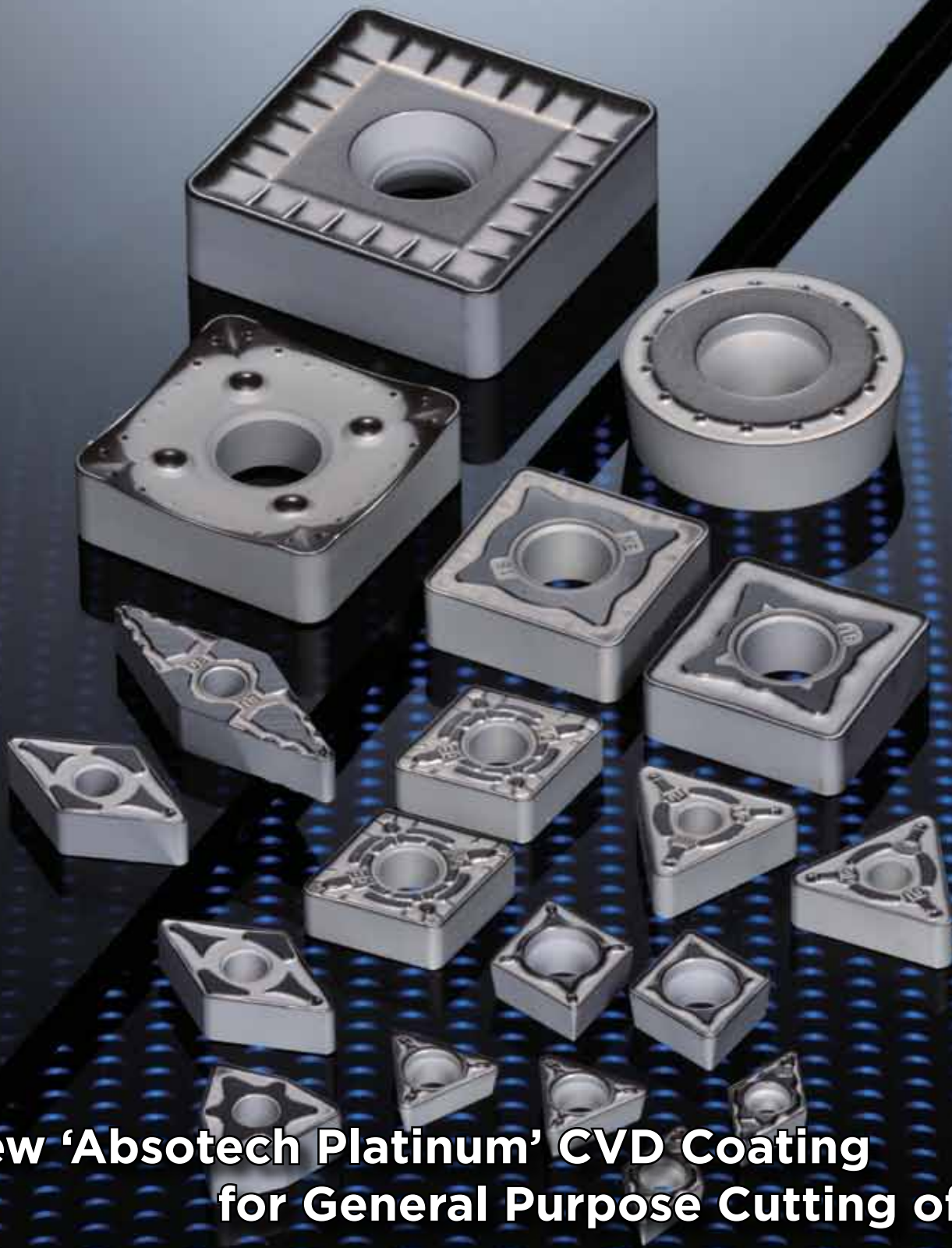


# AC8025P Grade for Steel

P



**New 'Absotech Platinum' CVD Coating  
for General Purpose Cutting of Steel**

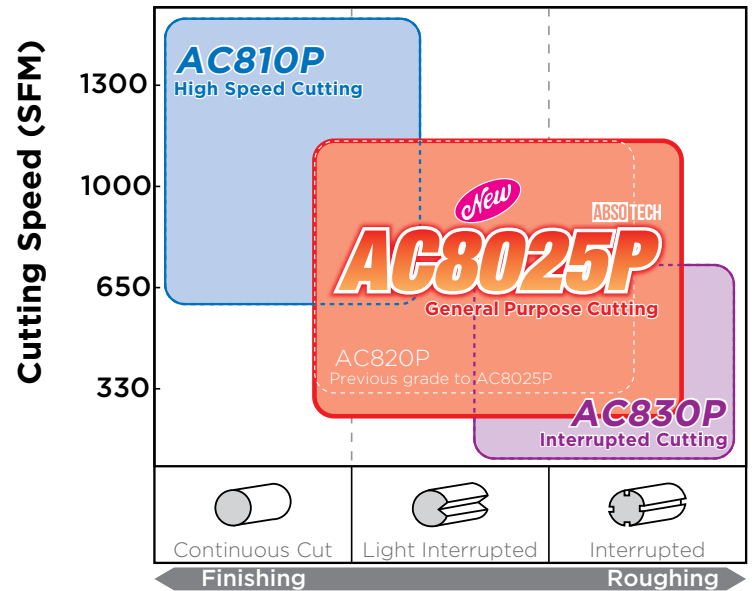
# AC8025P



## Features & Benefits

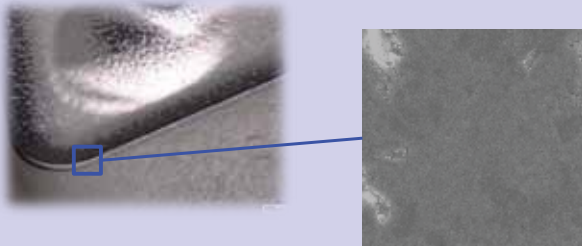
- Sumitomo's new CVD coating, Absotech Platinum, creates high reliability with edge treatment suitable for steel turning.
- New grade yields high adhesion strength, smooth surface treatment and a newly developed high-functional coat with reduced tensile stress that significantly reduces chipping.
- Excellent sharpness of the edge greatly reduces chattering.

## Application Range



### ■ New surface layer

- Excellent adhesion and chipping resistance
- Easily distinguishable used cutting edge



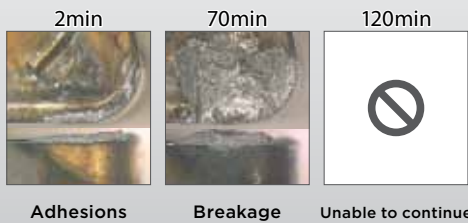
Ra=0.04 μm

Patented Process

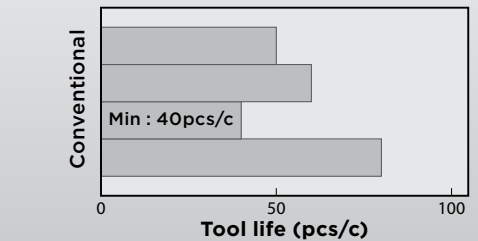
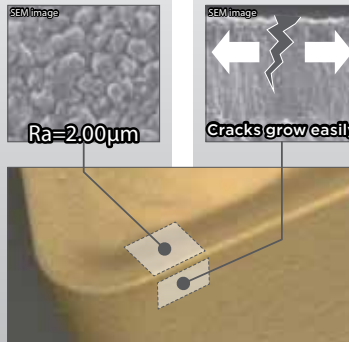
### Effect of smooth surface (Adhesion resistance)

### Effect of special surface layer (Chipping resistance)

Conventional Grade

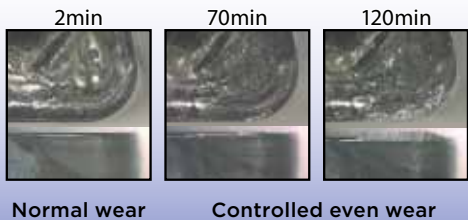


Work Material : 4115 Steel (Facing)  
Insert : CNMG432EGU  
Cutting Conditions :  $v_c=330-1000$  SFM  $f=0.012$  IPR  
 $a_p=0.059''$  Wet

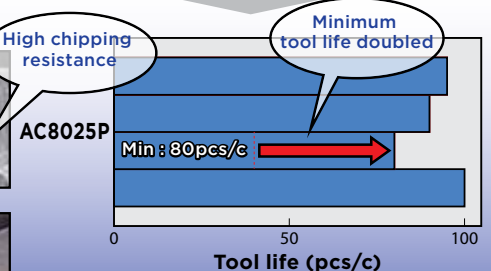
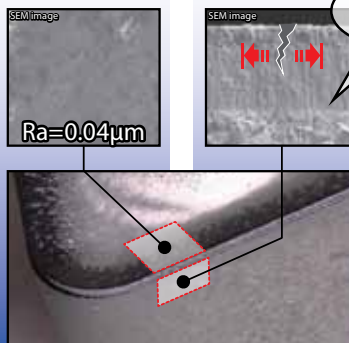


Work Material : 1049 Steel Hub  
Insert : CNMG433EGU  
Cutting Conditions :  $v_c=600$  SFM  $f=0.012$  IPR  
 $a_p=0.0197''$  Wet

AC8025P



Extremely smooth surface → Resists adhesions



longer and more stable tool life → Predictable tool life

# AC8025P Availability - Negative Inserts

CNMG 80° Diamond/Negative					
Sumitomo Catalog Number	AC8025P	Inscribed Circle	Thickness	Nose Radius	Insert Hole Diameter
CNMG431EEG	●	.500	.1875	.0156	.2031
CNMG432EEG	●	.500	.1875	.0313	.2031
CNMG433EEG	●	.500	.1875	.0469	.2031
CNMG543EEG	●	.625	.250	.0469	.250
CNMG643EEG	●	.750	.250	.0469	.3126
CNMG432EEM	●	.500	.1875	.0313	.2031
CNMG433EEM	●	.500	.1875	.0469	.2031
CNMG543EEM	●	.625	.250	.0469	.250
CNMG643EEM	●	.750	.250	.0469	.3126
CNMG431EFL	●	.500	.1875	.0156	.2031
CNMG432EFL	●	.500	.1875	.0313	.2031
CNMG431EGE	●	.500	.1875	.0156	.2031
CNMG432EGE	●	.500	.1875	.0313	.2031
CNMG433EGE	●	.500	.1875	.0469	.2031
CNMG434EGE	●	.500	.1875	.0625	.2031
CNMG542EGE	●	.625	.250	.0313	.250
CNMG543EGE	●	.625	.250	.0469	.250
CNMG643EGE	●	.750	.250	.0469	.3126
CNMG644EGE	●	.750	.250	.0625	.3126
CNMG322EGU	●	.375	.125	.0313	.150
CNMG431EGU	●	.500	.1875	.0156	.2031
CNMG432EGU	●	.500	.1875	.0313	.2031
CNMG433EGU	●	.500	.1875	.0469	.2031
CNMG542EGU	●	.625	.250	.0313	.250
CNMG543EGU	●	.625	.250	.0469	.250
CNMG432EGUW	●	.500	.1875	.0313	.2031
CNMG433EGUW	●	.500	.1875	.0469	.2031
CNMG543EGUW	●	.625	.250	.0469	.250
CNMG431ELU	●	.500	.1875	.0156	.2031
CNMG432ELU	●	.500	.1875	.0313	.2031
CNMG433ELU	●	.500	.1875	.0469	.2031
CNMG431ELUW	●	.500	.1875	.0156	.2031
CNMG432ELUW	●	.500	.1875	.0313	.2031
CNMG433ELUW	●	.500	.1875	.0469	.2031
CNMG432EME	●	.500	.1875	.0313	.2031
CNMG433EME	●	.500	.1875	.0469	.2031
CNMG434EME	●	.500	.1875	.0625	.2031
CNMG542EME	●	.625	.250	.0313	.250
CNMG543EME	●	.625	.250	.0469	.250
CNMG544EME	●	.625	.250	.0625	.250
CNMG643EME	●	.750	.250	.0469	.3126
CNMG644EME	●	.750	.250	.0625	.3126
CNMG866EME	●	1.00	.375	.0938	.3622
CNMG432EMU	●	.500	.1875	.0313	.2031
CNMG433EMU	●	.500	.1875	.0469	.2031
CNMG434EMU	●	.500	.1875	.0625	.2031
CNMG542EMU	●	.625	.250	.0313	.250
CNMG543EMU	●	.625	.250	.0469	.250
CNMG544EMU	●	.625	.250	.0625	.250
CNMG643EMU	●	.750	.250	.0469	.3126
CNMG644EMU	●	.750	.250	.0625	.3126
CNMG866EMU	●	1.00	.375	.0938	.3622

CNMG 80° Diamond/Negative					
Sumitomo Catalog Number	AC8025P	Inscribed Circle	Thickness	Nose Radius	Insert Hole Diameter
CNMG432EMX	●	.500	.1875	.0313	.2031
CNMG433EMX	●	.500	.1875	.0469	.2031
CNMG434EMX	●	.500	.1875	.0625	.2031
CNMG542EMX	●	.625	.250	.0313	.250
CNMG543EMX	●	.625	.250	.0469	.250
CNMG544EMX	●	.625	.250	.0625	.250
CNMG643EMX	●	.750	.250	.0469	.3126
CNMG644EMX	●	.750	.250	.0625	.3126
CNMG322ENG	●	.375	.125	.0313	.150
CNMG431ENG	●	.500	.1875	.0156	.2031
CNMG432ENG	●	.500	.1875	.0313	.2031
CNMG433ENG	●	.500	.1875	.0469	.2031
CNMG542ENG	●	.625	.250	.0313	.250
CNMG543ENG	●	.625	.250	.0469	.250
CNMG642ENG	●	.750	.250	.0313	.3126
CNMG643ENG	●	.750	.250	.0469	.3126
CNMG644ENG	●	.750	.250	.0625	.3126
CNMG432ENZ	●	.500	.1875	.0313	.2031
CNMG542ENZ	●	.625	.250	.0313	.250
CNMG543ENZ	●	.625	.250	.0469	.250
CNMG642ENZ	●	.750	.250	.0313	.3126
CNMG643ENZ	●	.750	.250	.0469	.3126
CNMG644ENZ	●	.750	.250	.0625	.3126
CNMG431ESE	●	.500	.1875	.0156	.2031
CNMG432ESE	●	.500	.1875	.0313	.2031
CNMG433ESE	●	.500	.1875	.0469	.2031
CNMG431ESEW	●	.500	.1875	.0156	.2031
CNMG432ESEW	●	.500	.1875	.0313	.2031
CNMG433ESEW	●	.500	.1875	.0469	.2031
CNMG431ESU	●	.500	.1875	.0156	.2031
CNMG432ESU	●	.500	.1875	.0313	.2031
CNMG433ESU	●	.500	.1875	.0469	.2031
CNMG431ESX	●	.500	.1875	.0156	.2031
CNMG432ESX	●	.500	.1875	.0313	.2031
CNMG433ESX	●	.500	.1875	.0469	.2031
CNMG431EUP	●	.500	.1875	.0156	.2031
CNMG432EUP	●	.500	.1875	.0313	.2031
CNMG542EUP	●	.625	.250	.0313	.250
CNMG543EUP	●	.625	.250	.0469	.250
CNMG431EUX	●	.500	.1875	.0156	.2031
CNMG432EUX	●	.500	.1875	.0313	.2031
CNMG433EUX	●	.500	.1875	.0469	.2031
CNMG434EUX	●	.500	.1875	.0625	.2031
CNMG542EUX	●	.625	.250	.0313	.250
CNMG543EUX	●	.625	.250	.0469	.250
CNMG643EUX	●	.750	.250	.0469	.3126

DNMG 55° Diamond/Negative					
Sumitomo Catalog Number	AC8025P	Inscribed Circle	Thickness	Nose Radius	Insert Hole Diameter
DNMG431EEG	●	.500	.1875	.0156	.2031
DNMG432EEG	●	.500	.1875	.0313	.2031
DNMG432EEM	●	.500	.1875	.0313	.2031
DNMG431EFL	●	.500	.1875	.0156	.2031
DNMG432EFL	●	.500	.1875	.0313	.2031
DNMG332EGE	●	.375	.1875	.0313	.150
DNMG333EGE	●	.375	.1875	.0469	.150
DNMG431EGE	●	.500	.1875	.0156	.2031
DNMG432EGE	●	.500	.1875	.0313	.2031
DNMG433EGE	●	.500	.1875	.0469	.2031
DNMG331EGU	●	.375	.1875	.0156	.150
DNMG332EGU	●	.375	.1875	.0313	.150
DNMG431EGU	●	.500	.1875	.0156	.2031
DNMG432EGU	●	.500	.1875	.0313	.2031
DNMG433EGU	●	.500	.1875	.0469	.2031
DNMG331ELU	●	.375	.1875	.0156	.2031
DNMG332ELU	●	.375	.1875	.0313	.2031
DNMG431ELU	●	.500	.1875	.0156	.2031
DNMG432ELU	●	.500	.1875	.0313	.2031
DNMG432EME	●	.500	.1875	.0313	.2031
DNMG433EME	●	.500	.1875	.0469	.2031
DNMG432EMU	●	.500	.1875	.0313	.2031
DNMG433EMU	●	.500	.1875	.0469	.2031
DNMG432EMX	●	.500	.1875	.0313	.2031
DNMG433EMX	●	.500	.1875	.0469	.2031
DNMG331ENG	●	.375	.1875	.0156	.150
DNMG332ENG	●	.375	.1875	.0313	.150
DNMG431ENG	●	.500	.1875	.0156	.2031
DNMG432ENG	●	.500	.1875	.0313	.2031
DNMG542ENG	●	.625	.250	.0313	.250
DNMG543ENG	●	.625	.250	.0469	.250
DNMG432ENZ	●	.500	.1875	.0313	.2031
DNMG433ENZ	●	.500	.1875	.0469	.2031
DNMG542ENZ	●	.625	.250	.0313	.250
DNMG543ENZ	●	.625	.250	.0469	.250
DNMG544ENZ	●	.625	.250	.0625	.250
DNMG332ESE	●	.375	.1875	.0313	.150
DNMG432ESE	●	.500	.1875	.0313	.2031
DNMG433ESE	●	.500	.1875	.0469	.2031
DNMG331ESU	●	.375	.1875	.0156	.150
DNMG332ESU	●	.375	.1875	.0313	.150
DNMG431ESU	●	.500	.1875	.0156	.2031
DNMG432ESU	●	.500	.1875	.0313	.2031
DNMG433ESU	●	.500	.1875	.0469	.2031
DNMG431ESX	●	.500	.1875	.0156	.2031
DNMG432ESX	●	.500	.1875	.0313	.2031
DNMG431EUP	●	.500	.1875	.0156	.2031
DNMG432EUP	●	.500	.1875	.0313	.2031
DNMG431EUX	●	.500	.1875	.0156	.2031
DNMG432EUX	●	.500	.1875	.0313	.2031
DNMG433EUX	●	.500	.1875	.0469	.2031

DNMX 55° Diamond/Negative					
Sumitomo Catalog Number	AC8025P	Inscribed Circle	Thickness	Nose Radius	Insert Hole Diameter
DNMX332ESEW	●	.375	.1875	.0313	.150
DNMX431ESEW	●	.500	.1875	.0156	.2031
DNMX432ESEW	●	.500	.1875	.0313	.2031

See next page for negative inserts availability continued

# AC8025P Availability - Negative Inserts Cont'd

SNMG 90° Square/Negative				
Sumitomo Catalog Number	AC8025P Incribed Circle	Thickness	Nose Radius	Insert Hole Diameter
SNMG432EEG	● .500	.1875	.0313	.2031
SNMG432EEM	● .500	.1875	.0313	.2031
SNMG432EFL	● .500	.1875	.0313	.2031
SNMG432EGE	● .500	.1875	.0313	.2031
SNMG434EGE	● .500	.1875	.0625	.2031
SNMG544EGE	● .625	.250	.0625	.250
SNMG321EGU	● .375	.125	.0156	.150
SNMG431EGU	● .500	.1875	.0156	.2031
SNMG432EGU	● .500	.1875	.0313	.2031
SNMG433EGU	● .500	.1875	.0469	.2031
SNMG434EGU	● .500	.1875	.0625	.2031
SNMG543EGU	● .625	.250	.0469	.250
SNMG432EME	● .500	.1875	.0313	.2031
SNMG433EME	● .500	.1875	.0469	.2031
SNMG434EME	● .500	.1875	.0625	.2031
SNMG543EME	● .625	.250	.0469	.250
SNMG544EME	● .625	.250	.0625	.250
SNMG643EME	● .750	.250	.0469	.3126
SNMG644EME	● .750	.250	.0625	.3126
SNMG866EME	● 1.00	.375	.0938	.3622
SNMG432EMU	● .500	.1875	.0313	.2031
SNMG433EMU	● .500	.1875	.0469	.2031
SNMG434EMU	● .500	.1875	.0625	.2031
SNMG543EMU	● .625	.250	.0469	.250
SNMG544EMU	● .625	.250	.0625	.250
SNMG643EMU	● .750	.250	.0469	.250
SNMG644EMU	● .750	.250	.0625	.250
SNMG433EMX	● .500	.1875	.0469	.2031
SNMG434EMX	● .500	.1875	.0625	.2031
SNMG543EMX	● .625	.250	.0469	.250
SNMG544EMX	● .625	.250	.0625	.250
SNMG643EMX	● .750	.250	.0469	.3126
SNMG644EMX	● .750	.250	.0625	.3126
SNMG322ENG	● .375	.125	.0313	.150
SNMG432ENG	● .500	.1875	.0313	.2031
SNMG543ENG	● .625	.250	.0469	.250
SNMG643ENG	● .750	.250	.0469	.3126
SNMG644ENG	● .750	.250	.0625	.3126
SNMG432ENZ	● .500	.1875	.0313	.2031
SNMG432ESE	● .500	.1875	.0313	.2031
SNMG432ESU	● .500	.1875	.0313	.2031
SNMG432ESX	● .500	.1875	.0313	.2031
SNMG432EUP	● .500	.1875	.0313	.2031
SNMG432EUX	● .500	.1875	.0313	.2031
SNMG433EUX	● .500	.1875	.0469	.2031
SNMG434EUX	● .500	.1875	.0625	.2031
SNMG643EUX	● .750	.250	.0469	.3126
SNMG644EUX	● .750	.250	.0625	.3126
SNMG866EMU	● 1.00	.375	.0938	.3622
SNMG866ENG	● 1.00	.375	.0938	.3622

TNMG Triangle/Negative				
Sumitomo Catalog Number	AC8025P Incribed Circle	Thickness	Nose Radius	Insert Hole Diameter
TNMG331EEG	● .375	.1875	.0156	.150
TNMG332EEG	● .375	.1875	.0313	.150
TNMG332EEM	● .375	.1875	.0313	.150
TNMG331EFL	● .375	.1875	.0156	.150
TNMG332EFL	● .375	.1875	.0313	.150
TNMG331EGE	● .375	.1875	.0156	.150
TNMG332EGE	● .375	.1875	.0313	.150
TNMG333EGE	● .375	.1875	.0469	.150
TNMG432EGE	● .500	.1875	.0313	.2031
TNMG433EGE	● .500	.1875	.0469	.2031
TNMG331EGU	● .375	.1875	.0156	.150
TNMG332EGU	● .375	.1875	.0313	.150
TNMG333EGU	● .375	.1875	.0469	.150
TNMG431EGU	● .500	.1875	.0156	.2031
TNMG432EGU	● .500	.1875	.0313	.2031
TNMG433EGU	● .500	.1875	.0469	.2031
TNMG331ELU	● .375	.1875	.0156	.150
TNMG332ELU	● .375	.1875	.0313	.150
TNMG333ELU	● .375	.1875	.0469	.150
TNMG332EME	● .375	.1875	.0313	.150
TNMG432EME	● .500	.1875	.0313	.2031
TNMG433EME	● .500	.1875	.0469	.2031
TNMG434EME	● .500	.1875	.0625	.2031
TNMG332EMU	● .375	.150	.0313	.150
TNMG432EMU	● .500	.1875	.0313	.2031
TNMG433EMU	● .500	.1875	.0469	.2031
TNMG434EMU	● .500	.1875	.0625	.2031
TNMG543EMU	● .625	.250	.0469	.250
TNMG544EMU	● .625	.250	.0625	.250
TNMG432EMX	● .500	.1875	.0313	.2031
TNMG321ENG	● .375	.125	.0156	.150
TNMG322ENG	● .375	.125	.0313	.150
TNMG332ENG	● .375	.1875	.0313	.150
TNMG432ENG	● .500	.1875	.0313	.2031
TNMG433ENG	● .500	.1875	.0469	.2031
TNMG542ENG	● .625	.250	.0313	.250
TNMG543ENG	● .625	.250	.0469	.250
TNMG544ENG	● .625	.250	.0625	.250
TNMG666ENG	● .750	.375	.0938	.3126
TNMG332ENZ	● .375	.1875	.0313	.150
TNMG432ENZ	● .500	.1875	.0313	.2031
TNMG434ENZ	● .500	.1875	.0625	.2031
TNMG542ENZ	● .625	.250	.0313	.250
TNMG543ENZ	● .625	.250	.0469	.250
TNMG544ENZ	● .625	.250	.0625	.250
TNMG666ENZ	● .750	.375	.0938	.3126
TNMG331ESE	● .375	.1875	.0156	.150
TNMG332ESE	● .375	.1875	.0313	.150
TNMG321ESU	● .375	.125	.0156	.150
TNMG322ESU	● .375	.125	.0313	.150
TNMG331ESU	● .375	.1875	.0156	.150
TNMG332ESU	● .375	.1875	.0313	.150
TNMG333ESU	● .375	.1875	.0469	.150
TNMG321ESX	● .375	.125	.0156	.150
TNMG322ESX	● .375	.125	.0313	.150
TNMG332ESX	● .375	.1875	.0313	.150
TNMG431ESX	● .500	.1875	.0156	.2031
TNMG432ESX	● .500	.1875	.0313	.2031
TNMG433ESX	● .500	.1875	.0469	.2031

TNMG Triangle/Negative- Cont'd				
Sumitomo Catalog Number	AC8025P Incribed Circle	Thickness	Nose Radius	Insert Hole Diameter
TNMG331EUP	● .375	.1875	.0156	.150
TNMG332EUP	● .375	.1875	.0313	.150
TNMG432EUP	● .500	.1875	.0313	.2031
TNMG321EUX	● .375	.125	.0156	.150
TNMG322EUX	● .375	.125	.0313	.150
TNMG331EUX	● .375	.1875	.0156	.150
TNMG332EUX	● .375	.1875	.0313	.150
TNMG333EUX	● .375	.1875	.0469	.150
TNMG432EUX	● .500	.1875	.0313	.2031

TNMM Triangle/Negative				
Sumitomo Catalog Number	AC8025P Incribed Circle	Thickness	Nose Radius	Insert Hole Diameter
TNMM432EHG	● .500	.1875	.0313	.2031
TNMM433EHG	● .500	.1875	.0469	.2031
TNMM434EHG	● .500	.1875	.0625	.2031

TRM 55° Triangle/Negative				
Sumitomo Catalog Number	AC8025P Incribed Circle	Thickness	Nose Radius	Insert Hole Diameter
TRM551704-GU	● .394	.197	.0156	.084
TRM551708-GU	● .394	.197	.0313	.084
TRM551712-GU	● .394	.197	.0469	.084
TRM551704-LU	● .394	.197	.0156	.084
TRM551708-LU	● .394	.197	.0313	.084
TRM551712-LU	● .394	.197	.0469	.084
TRM551712-SU	● .394	.197	.0469	.084

VNMG 35° Diamond/Negative				
Sumitomo Catalog Number	AC8025P Incribed Circle	Thickness	Nose Radius	Insert Hole Diameter
VNMG331EFL	● .375	.1875	.0156	.150
VNMG332EFL	● .375	.1875	.0313	.150
VNMG331EGE	● .375	.1875	.0156	.150
VNMG332EGE	● .375	.1875	.0313	.150
VNMG333EGE	● .375	.1875	.0469	.150
VNMG331EGU	● .375	.1875	.0156	.150
VNMG332EGU	● .375	.1875	.0313	.150
VNMG333EGU	● .375	.1875	.0469	.150
VNMG331ELU	● .375	.1875	.0156	.150
VNMG332ELU	● .375	.1875	.0313	.150
VNMG331ENG	● .375	.1875	.0156	.150
VNMG332ENG	● .375	.1875	.0313	.150
VNMG332ENZ	● .375	.1875	.0313	.150
VNMG333ENZ	● .375	.1875	.0469	.150
VNMG432ENZ	● .500	.1875	.0313	.2031
VNMG433ENZ	● .500	.1875	.0469	.2031
VNMG331ESE	● .375	.1875	.0156	.150
VNMG332ESE	● .375	.1875	.0313	.150
VNMG331ESU	● .375	.1875	.0156	.150
VNMG332ESU	● .375	.1875	.0313	.150
VNMG331ESX	● .375	.1875	.0156	.150
VNMG332ESX	● .375	.1875	.0313	.150
VNMG331EUP	● .375	.1875	.0156	.150
VNMG332EUP	● .375	.1875	.0313	.150
VNMG331EUX	● .375	.1875	.0156	.150
VNMG332EUX	● .375	.1875	.0313	.150
VNMG333EUX	● .375	.1875	.0469	.150

WNMG Trigon/Negative				
Sumitomo Catalog Number	AC8025P Incribed Circle	Thickness	Nose Radius	Insert Hole Diameter
WNMG332EEG	● .375	.1875	.0313	.150
WNMG432EEG	● .500	.1875	.0313	.2031
WNMG432EEM	● .500	.1875	.0313	.2031
WNMG431EFL	● .500	.1875	.0156	.2031
WNMG432EFL	● .500	.1875	.0313	.2031
WNMG332EGE	● .375	.1875	.0313	.150
WNMG432EGE	● .500	.1875	.0313	.2031
WNMG433EGE	● .500	.1875	.0469	.2031
WNMG434EGE	● .500	.1875	.0625	.2031
WNMG332EGU	● .375	.1875	.0313	.150
WNMG431EGU	● .500	.1875	.0156	.2031
WNMG432EGU	● .500	.1875	.0313	.2031
WNMG433EGU	● .500	.1875	.0469	.2031
WNMG332EGUW	● .500	.1875	.0313	.150
WNMG432EGUW	● .500	.1875	.0313	.2031
WNMG433EGUW	● .500	.1875	.0469	.2031
WNMG331ELU	● .375	.1875	.0156	.150
WNMG332ELU	● .375	.1875	.0313	.150
WNMG431ELU	● .500	.1875	.0156	.2031
WNMG432ELU	● .500	.1875	.0313	.2031
WNMG433ELU	● .500	.1875	.0469	.2031
WNMG331ELUW	● .500	.1875	.0156	.150
WNMG332ELUW	● .500	.1875	.0313	.150
WNMG431ELUW	● .500	.1875	.0156	.2031
WNMG432ELUW	● .500	.1875	.0313	.2031
WNMG332EME	● .375	.1875	.0313	.150
WNMG432EME	● .500	.1875	.0313	.2031
WNMG433EME	● .500	.1875	.0469	.2031
WNMG434EME	● .500	.1875	.0625	.2031
WNMG332EMU	● .375	.1875	.0313	.150
WNMG432EMU	● .500	.1875	.0313	.2031
WNMG433EMU	● .500	.1875	.0469	.2031
WNMG543EMU	● .625	.250	.0469	.250
WNMG432EMX	● .500	.1875	.0313	.2031
WNMG433EMX	● .500	.1875	.0469	.2031
WNMG431ENG	● .500	.1875	.0156	.2031
WNMG432ENG	● .500	.1875	.0313	.2031
WNMG433ENG	● .500	.1875	.0469	.2031
WNMG543ENG	● .625	.250	.0469	.250
WNMG431ENZ	● .500	.1875	.0156	.2031
WNMG432ENZ	● .500	.1875	.0313	.2031
WNMG331ESE	● .375	.1875	.0156	.150
WNMG332ESE	● .375	.1875	.0313	.150
WNMG431ESE	● .500	.1875	.0156	.2031
WNMG432ESE	● .500	.1875	.0313	.2031
WNMG433ESE	● .500	.1875	.0469	.2031
WNMG432ESEW	● .500	.1875	.0313	.2031
WNMG433ESEW	● .500	.1875	.0469	.2031
WNMG331ESU	● .375	.1875	.0156	.150
WNMG332ESU	● .375	.1875	.0313	.150
WNMG431ESU	● .500	.1875	.0156	.2031
WNMG432ESU	● .500	.1875	.0313	.2031
WNMG433ESU	● .500	.1875	.0469	.2031
WNMG431ESX	● .500	.1875	.0156	.2031
WNMG432ESX	● .500	.1875	.0313	.2031
WNMG433ESX	● .500	.1875	.0469	.2031
WNMG432EUX	● .500	.1875	.0313	.2031
WNMG433EUX	● .500	.1875	.0469	.2031

● = USA Stocked item

# AC8025P Availability - Positive Inserts

## CCMT 80° Diamond/ 7° Relief Angle

Sumitomo Catalog Number	AC8025P	Inscribed Circle	Thickness	Nose Radius	Insert Hole Diameter
CCMT21.51EFM	●	.250	.094	.0156	.110
CCMT21.50.5ELB	●	.250	.094	.0078	.110
CCMT21.51ELB	●	.250	.094	.0156	.110
CCMT21.52ELB	●	.250	.094	.0313	.110
CCMT32.50.5ELB	●	.375	.156	.0078	.1732
CCMT32.51ELB	●	.375	.156	.0156	.1732
CCMT32.52ELB	●	.375	.156	.0313	.1732
CCMT21.50.5ELU	●	.250	.094	.0078	.110
CCMT21.51ELU	●	.250	.094	.0156	.110
CCMT32.51ELU	●	.375	.156	.0156	.1732
CCMT32.52ELU	●	.375	.156	.0313	.1732
CCMT32.51ELUW	●	.375	.156	.0156	.1732
CCMT32.52ELUW	●	.375	.156	.0313	.1732
CCMT32.51EMU	●	.375	.156	.0156	.1732
CCMT32.52EMU	●	.375	.156	.0313	.1732
CCMT21.51ENK	●	.250	.094	.0156	.110
CCMT21.52ENK	●	.250	.094	.0313	.110
CCMT32.51ENK	●	.375	.125	.0156	.1732
CCMT32.52ENK	●	.375	.125	.0313	.1732
CCMT431ENK	●	.500	.1875	.0156	.2165
CCMT432ENK	●	.500	.1875	.0313	.2165
CCMT21.50.5ESU	●	.250	.094	.0078	.110
CCMT21.51ESU	●	.250	.094	.0156	.110
CCMT21.52ESU	●	.250	.094	.0313	.110
CCMT32.50.5ESU	●	.375	.156	.0078	.1732
CCMT32.51ESU	●	.375	.156	.0156	.1732
CCMT32.52ESU	●	.375	.156	.0313	.1732
CCMT431ESU	●	.500	.1875	.0156	.2165
CCMT432ESU	●	.500	.1875	.0313	.2165

## CPMT 80° Diamond/11° Relief Angle

Sumitomo Catalog Number	AC8025P	Inscribed Circle	Thickness	Nose Radius	Insert Hole Diameter
CPMT321ELU	●	.375	.125	.0156	.1732
CPMT2.51.51EMU	●	.3125	.094	.0156	.134
CPMT2.51.52EMU	●	.3125	.094	.0313	.134
CPMT2.51.51ESU	●	.3125	.094	.0156	.134
CPMT2.51.52ESU	●	.3125	.094	.0313	.134
CPMT21.51ESU	●	.250	.094	.0156	.110
CPMT21.52ESU	●	.250	.094	.0313	.110
CPMT32.51ESU	●	.375	.156	.0156	.1732
CPMT32.52ESU	●	.375	.156	.0313	.1732
CPMT321ESU	●	.375	.125	.0156	.1732
CPMT322ESU	●	.375	.125	.0313	.1732

● = USA Stocked item

## DCMT 55° Diamond/ 7° Relief Angle

Sumitomo Catalog Number	AC8025P	Inscribed Circle	Thickness	Nose Radius	Insert Hole Diameter
DCMT21.50.5ELB	●	.250	.094	.0078	.110
DCMT21.51ELB	●	.250	.094	.0156	.110
DCMT21.52ELB	●	.250	.094	.0313	.110
DCMT32.50.5ELB	●	.375	.156	.0078	.1732
DCMT32.51ELB	●	.375	.156	.0156	.1732
DCMT32.52ELB	●	.375	.156	.0313	.1732
DCMT21.51ELU	●	.250	.094	.0156	.110
DCMT32.52ELU	●	.375	.156	.0313	.1732
DCMT32.51EMU	●	.375	.156	.0156	.1732
DCMT32.52EMU	●	.375	.156	.0313	.1732
DCMT21.51ENK	●	.250	.094	.0156	.110
DCMT32.51ENK	●	.375	.156	.0156	.1732
DCMT32.52ENK	●	.375	.156	.0313	.1732
DCMT21.50.5ESU	●	.250	.094	.0078	.110
DCMT21.51ESU	●	.250	.094	.0156	.110
DCMT21.52ESU	●	.250	.094	.0313	.110
DCMT32.50.5ESU	●	.375	.156	.0078	.1732
DCMT32.51ESU	●	.375	.156	.0156	.1732
DCMT32.52ESU	●	.375	.156	.0313	.1732

## DPMT 55° Diamond/ 11° Relief Angle

Sumitomo Catalog Number	AC8025P	Inscribed Circle	Thickness	Nose Radius	Insert Hole Diameter
DPMT21.51ESU	●	.250	.094	.0156	.110
DPMT32.51ESU	●	.375	.156	.0156	.1732
DPMT32.52ESU	●	.375	.156	.0313	.1732

## SCMT 90° Square/ 7° Relief Angle

Sumitomo Catalog Number	AC8025P	Inscribed Circle	Thickness	Nose Radius	Insert Hole Diameter
SCMT32.51ELB	●	.375	.156	.0156	.1732
SCMT32.52ELB	●	.375	.156	.0313	.1732
SCMT32.51ELU	●	.375	.156	.0156	.1732
SCMT32.52ELU	●	.375	.156	.0313	.1732
SCMT32.52EMU	●	.375	.156	.0313	.1732
SCMT32.52ENK	●	.375	.156	.0313	.1732
SCMT431ENK	●	.500	.1875	.0156	.2165
SCMT432ENK	●	.500	.1875	.0313	.2165
SCMT32.51ESU	●	.375	.156	.0156	.1732
SCMT32.52ESU	●	.375	.156	.0313	.1732
SCMT431ESU	●	.500	.1875	.0156	.2165
SCMT432ESU	●	.500	.1875	.0313	.2165

## SPG 90° Square/ 11° Relief Angle

Sumitomo Catalog Number	AC8025P	Inscribed Circle	Thickness	Nose Radius	Insert Hole Diameter
SPG422	●	.500	.125	.0313	-
SPG423	●	.500	.125	.0469	-
SPG432	●	.500	.1875	.0313	-
SPG433	●	.500	.1875	.0469	-
SPG632	●	.750	.1875	.0313	-
SPG633	●	.750	.1875	.0469	-
SPG634	●	.750	.1875	.0625	-

## SPMN 90° Square/ 11° Relief Angle

Sumitomo Catalog Number	AC8025P	Inscribed Circle	Thickness	Nose Radius	Insert Hole Diameter
SPMN322	●	.375	.125	.0313	-
SPMN421	●	.500	.125	.0156	-
SPMN422	●	.500	.125	.0313	-
SPMN634	●	.750	.1875	.0625	-

## TBGT Triangle/ 5° Relief Angle

Sumitomo Catalog Number	AC8025P	Inscribed Circle	Thickness	Nose Radius	Insert Hole Diameter
TBGT520.5L	●	.156	.0625	.0078	.090
TBGT521L	●	.156	.0625	.0156	.090
TBGT520.5LFX	●	.156	.0625	.0078	.090
TBGT521LFX	●	.156	.0625	.0156	.090

## TCMT Triangle/ 7° Relief Angle

Sumitomo Catalog Number	AC8025P	Inscribed Circle	Thickness	Nose Radius	Insert Hole Diameter
TCMT21.51ELB	●	.250	.094	.0156	.110
TCMT21.52ELB	●	.250	.094	.0313	.110
TCMT21.51ENK	●	.250	.094	.0156	.110
TCMT21.52ENK	●	.250	.094	.0313	.110
TCMT32.51ENK	●	.375	.156	.0156	.1693
TCMT32.52ENK	●	.375	.156	.0313	.1693
TCMT32.53ENK	●	.375	.156	.0469	.1693
TCMT21.51ESU	●	.250	.094	.0156	.110
TCMT21.52ESU	●	.250	.094	.0313	.110
TCMT32.51ESU	●	.375	.156	.0156	.1693
TCMT32.52ESU	●	.375	.156	.0313	.1693

## TPG Triangle/ 11° Relief Angle

Sumitomo Catalog Number	AC8025P	Inscribed Circle	Thickness	Nose Radius	Insert Hole Diameter
TPG221	●	.250	.125	.0156	-
TPG222	●	.250	.125	.0313	-
TPG321	●	.375	.125	.0156	-
TPG322	●	.375	.125	.0313	-
TPG323	●	.375	.125	.0469	-
TPG324	●	.375	.125	.0625	-
TPG332	●	.375	.1875	.0313	-
TPG431	●	.500	.1875	.0156	-
TPG432	●	.500	.1875	.0313	-
TPG433	●	.500	.1875	.0469	-
TPG434	●	.500	.1875	.0625	-
TPG436	●	.500	.1875	.0938	-

## TPM Triangle/ 11° Relief Angle

Sumitomo Catalog Number	AC8025P	Inscribed Circle	Thickness	Nose Radius	Insert Hole Diameter
TPMN321	●	.375	.125	.0156	-
TPMN322	●	.375	.125	.0313	-
TPMN432	●	.500	.1875	.0313	-
TPMN433	●	.500	.1875	.0469	-

See next page for positive inserts availability continued

# AC8025P Availability - Positive Inserts Cont'd

TPMR Triangle/ 11° Relief Angle					
Sumitomo Catalog Number	AC8025P	Inscribed Circle	Thickness	Nose Radius	Insert Hole Diameter
TPMR221ENF	●	.250	.125	.0156	
TPMR222ENF	●	.250	.125	.0313	
TPMR321ENF	●	.375	.125	.0156	
TPMR322ENF	●	.375	.125	.0313	
TPMR323ENF	●	.375	.125	.0469	
TPMR432ENF	●	.500	.1875	.0313	
TPMR433ENF	●	.500	.1875	.0469	
TPMR322EUJ	●	.375	.125	.0313	

TPMT Triangle/ 11° Relief Angle					
Sumitomo Catalog Number	AC8025P	Inscribed Circle	Thickness	Nose Radius	Insert Hole Diameter
TPMT630.5ELB	●	.1875	.094	.0078	.090
TPMT631ELB	●	.1875	.094	.0156	.090
TPMT1.81.50.5ELB	●	.219	.094	.0078	.098
TPMT1.81.51ELB	●	.219	.094	.0156	.098
TPMT220.5ELB	●	.250	.125	.0078	.130
TPMT221ELB	●	.250	.125	.0156	.130
TPMT222ELB	●	.250	.125	.0313	.130
TPMT331ELB	●	.375	.1875	.0156	.1693
TPMT332ELB	●	.375	.1875	.0313	.1693

TPMT Triangle/ 11° Relief Angle Cont'd					
Sumitomo Catalog Number	AC8025P	Inscribed Circle	Thickness	Nose Radius	Insert Hole Diameter
TPMT221ELU	●	.250	.125	.0156	.130
TPMT222ELU	●	.250	.125	.0313	.130
TPMT222EMU	●	.250	.125	.0313	.130
TPMT331EMU	●	.375	.1875	.0156	.1693
TPMT332EMU	●	.375	.1875	.0313	.1693
TPMT221ENF	●	.250	.125	.0156	.130
TPMT222ENF	●	.250	.125	.0313	.130
TPMT331ENF	●	.375	.1875	.0156	.1693
TPMT332ENF	●	.375	.1875	.0313	.1693
TPMT1.81.50.5ESU	●	.219	.094	.0078	.098
TPMT1.81.51ESU	●	.219	.094	.0156	.098
TPMT21.50.5ESU	●	.250	.094	.0078	.110
TPMT21.51ESU	●	.250	.094	.0156	.110
TPMT21.52ESU	●	.250	.094	.0313	.110
TPMT220.5ESU	●	.250	.125	.0078	.130
TPMT221ESU	●	.250	.125	.0156	.130
TPMT222ESU	●	.250	.125	.0313	.130
TPMT32.51ESU	●	.375	.156	.0156	.1693
TPMT32.52ESU	●	.375	.156	.0313	.1693
TPMT331ESU	●	.375	.1875	.0156	.1693
TPMT332ESU	●	.375	.1875	.0313	.1693

VBMT 35° Diamond/ 5° Relief Angle					
Sumitomo Catalog Number	AC8025P	Inscribed Circle	Thickness	Nose Radius	Insert Hole Diameter
VBMT331ELB	●	.375	.1875	.0156	.1732
VBMT332ELB	●	.375	.1875	.0313	.1732
VBMT331ELU	●	.375	.1875	.0156	.1732
VBMT332ELU	●	.375	.1875	.0313	.1732
VBMT332ENK	●	.375	.1875	.0313	.1732
VBMT221ESU	●	.250	.125	.0156	.134
VBMT222ESU	●	.250	.125	.0313	.134
VBMT331ESU	●	.375	.1875	.0156	.1732
VBMT332ESU	●	.375	.1875	.0313	.1732

VCMT 35° Diamond/ 7° Relief Angle					
Sumitomo Catalog Number	AC8025P	Inscribed Circle	Thickness	Nose Radius	Insert Hole Diameter
VCMT331ELB	●	.375	.1875	.0156	.1732
VCMT332ELB	●	.375	.1875	.0313	.1732
VCMT331ELU	●	.375	.1875	.0156	.1732
VCMT332ELU	●	.375	.1875	.0313	.1732
VCMT331ENK	●	.375	.1875	.0156	.1732
VCMT332ENK	●	.375	.1875	.0313	.1732
VCMT331ESU	●	.375	.1875	.0156	.1732
VCMT332ESU	●	.375	.1875	.0313	.1732

WPMT 80° Trigon/ 11° Relief Angle					
Sumitomo Catalog Number	AC8025P	Inscribed Circle	Thickness	Nose Radius	Insert Hole Diameter
WPMT110204N-LB	●	.250	.094	.0156	.110
WPMT160308N-LB	●	.375	.125	.0313	.1732

## Headquarters

1001 Business Center Drive  
Mount Prospect, IL 60056-2181  
P.O. Box 545,  
Mt. Prospect, IL 60056-0545  
Phone: (800) 950-5202  
Phone: (847) 635-0044  
Fax: (847) 635-7866  
<http://www.sumicarbide.com>



**Sumitomo Electric Carbide, Inc.**

## Sumitomo Electric Tool Engineering Center

5637 S. Westridge Drive  
New Berlin, WI 53151  
Phone: (800) 950-5202

## Indiana Branch

595 S. Emerson Avenue  
Suite 100  
Greenwood, IN 46143  
Phone: (800) 950-5202

## Detroit Branch

14496 Sheldon Road #230  
Plymouth, MI 48170  
Phone: (800) 239-5177  
Phone: (734) 451-0200  
Fax: (734) 451-5338

## Huntsville Branch

6700 Odyssey Drive  
Suite 211  
Huntsville, AL 35806  
Phone: (256) 971-1203  
Fax: (256) 971-1205

## Torrance Branch

21241 South Western Avenue  
Suite 120  
Torrance, CA 90501  
Phone: (800) 950-5202  
Fax: (310) 782-0211

## Sumitomo Carbide Canada, Inc.

150 Research Lane  
Unit #210  
Guelph, Ontario N1G 4T2  
Canada  
Phone: (519) 265-6050  
Phone: (844) 211-6050

